

1080P FULL HD MEDIA PLAYER

User Manual V2.0

Contents

Introduction	2
Chapter I Product Specification	2
1.1 Basic Function	2
1.2 Parameters List	3
1.3 Quick Installation	4
Chapter II Button Function of Remote Controller	5
Chapter III Using Guide	6
3.1 Home	6
3.2 Media Playing	6
3.2.1 Movie	7
3.2.2 Photo	8
3.2.3 Music	9
3.2.4 Explorer	10
3.2.5 Setting	11
Chapter IV Troubleshooting	12

Introduction

This manual provides you the using method, using skill and related important notices. Please carefully read this manual to quickly and correctly understand how to use this TV box before starting using it.

Our company shall only be responsible for the repair of those failures of product itself, and take no responsibility for the hard disk damage and information loss caused by improper operation, customer's repair and other abnormalities, and other incurred results.

In order to continuously improve the product function and performance, our company reserves the right to improve the product described in this manual without prior notice.

Chapter I Product Specification

1.1 Basic Function

- Support decoding of MPEG1/2/4 and H.264. The highest definition is up to FULL HD (1920*1080)
- Support decoding of RM/RMVB and FLV. The highest definition for RM/RMVB is up to 720P (1280*720)
- Support output of all ports, such as HDMI, VGA, YPbPr and CVBS(AV), meet various application requirements
- Support direct playing of many popular video formats, such as AVI/MPG/MPEG/XVID/VOB/DAT/MP4/TS/M2TS/MKV/H.264/RM/RMVB/MOV/DIVX3/DIVX4/DIVX5/DIVX6 etc
- Support decoding of such audios as PCM/DTS/AC3/MP3/RA/AMR
- Easy installation. It can be used after you connect it to the TV set.

and insert the related devices. It is unnecessary to install any software. Full-function remote controller and Chinese screen make it easy to operate by both the old and children

■ Support connection of SD/SDHC/MMC card, U-disk, USB hard disk, USB hard disk holder, and expand many selections

■ Support such subtitle formats as SMI/ ASS/ SSA/ SRT/ SUB/ PGS/ SUB+IDX

■ Picture playing, support such picture formats as JPG/ BMP/ PNG/ GIF/ TIFF. Support super high definition up to 13068*10173 for JPG picture format

■ Music enjoyment, support playing such music formats as MP3/ WMA/ WAV/ OGG/ AAC/ FLAC/ ALAC/APE

1.2 Parameters List

Power	Positive inside and negative outside, 5V/2A
File System	FAT32, NTFS
Video Output	Component YPbPr, VGA, HDMI 1.3 and CVBS(AV)
Audio Output	Analog stereo, digital audio HDMI.1.3
Video Format	Support AVI/ MPG/ MPEG/ XVID/ VOB/ DAT/ MP4/ TS/ M2TS/ MKV/ H.264/ RM/ RMVB and so forth
Audio Format	Support decoding of such audios as PCM/ DTS/ AC3/ MP3/ RA/ AMR, support playing such music formats as MP3/ WMA /OGG/APE
Picture Format	Support such picture formats as JPG/ BMP/PNG/ GIF/ TIFF
Subtitle Format	SMI/ ASS/ SSA/ SRT/ SUB/ PGS/ SUB+IDX
Language	Simplified Chinese/ Traditional Chinese/ English etc
USB Port	USB HOST 2.0
Support Memory Card	SD/ SDHC/ MMC Card
Indication Light	Green Light: Working Status; Red Light: Standby Status
Working Environment	Working Temperature: -10 ~ +45°C; Humidity: <90% Storing Temperature: -20 ~ +70°C; Humidity: <95%

1.3 Quick Installation

Step I: Connect display

1. CVBS Video Output: Connect one end of AV video cable (three-color lotus form plug of yellow, red and white) to CVBS output terminal of this player, and connect the other end to the TV set.

2. Component Video Output: Connect one end of the component video cable (three-color lotus form plug of green, blue and red) to YPbPr output terminal of this player, and connect the other end to the TV set. CVBS and YPbPr mutually use left audio channel, right audio channel and stereo. Please pay much attention to the wiring.

3. HDMI Video Output: Connect one end of HDMI cable to HDMI output terminal of this player, and connect the other end to the TV set.

4. VGA Video Output: Connect one end of VGA cable to VGA output terminal of this player, and connect the other end to the TV set. VGA and CVBS mutually use left audio channel, right audio channel and stereo. Please pay much attention to the wiring.

When the TV set is connected, plug the supplied power adapter, and then switch the TV set to the correct video mode, and then you can see the output in the TV set.

Step II: Connect peripheral storage device

1. This player supports peripheral USB storage device, and can connect such removable storage devices as U disk, mobile hard disk and other storage device with USB port.

2. This player has a multi-function card holder, which can hold SD, SDHC and MMC memory card.

Chapter II Button Function of Remote Controllor

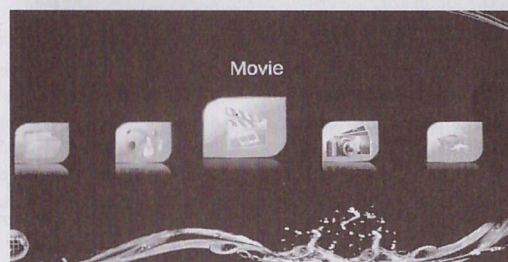
	Mute: On/Off
	Power: Standby/On
TV-Mode	Output system switch, HDMI, VGA, YPbPr, CVBS
OSD	Open OSD information
Angle	Rotate the picture
Zoom	Zoom picture/movie/text
Setup	System setting
	Up
	Down
	Left or exit the current level
	Right or go to the next level
OK/ENTER	Confirm,
	Play/Pause
	Stop / ESC
16:9/4:3	Switch screen display ratio
Audio/L/R	Audio switch
	Fast rewind
	Fast forward
	Previous track
	Next track
VOL+	Volume up
VOL-	Volume Down
Sub-T/SRT	Open/close the movie subtitle
Movie	Open the movie playing window
Music	Open the music playing window
Photo	Open the picture playing window

Chapter III Using Guide

3.1 Home

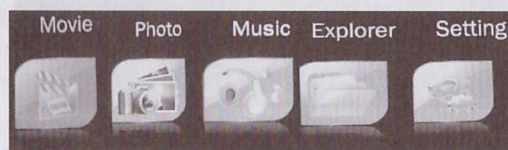
Power on the TV set, and select the correct video input channel. After connecting this player to the power supply, press the "ON/OFF" button to "ON" and wait for a while to enter the home page.

Press the "Device" button on the remote controller to switch between different devices.



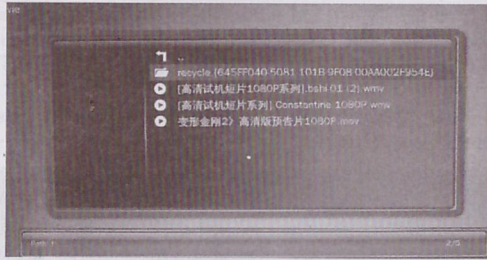
Press the "◀/▶" button on the remote controller to select "Movie", "Photo", "Music", "Explorer" or "Settings" icons, and then press the "OK" button to enter the media playing.

3.2 Media Playing

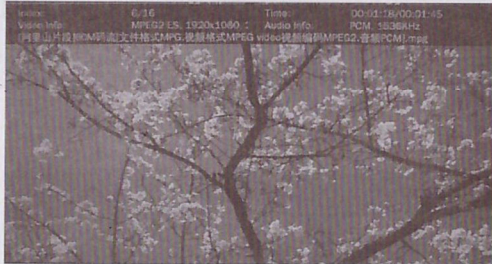


3.2.1 Movie

Select the "Movie" icon, and then press the "OK" button on the remote controller to enter.



If the connected device has many divisions, these divisions will be divided into different columns. Select the correct column and press the "OK" button to enter. If there are multiple levels of directories, you can proceed with the same procedure. Press the "ESC/Exit" button to return to the previous directory.



After you select a movie, a related information for the movie will be displayed. And then you can press the "OK" button to play the movie in full screen.

~7~



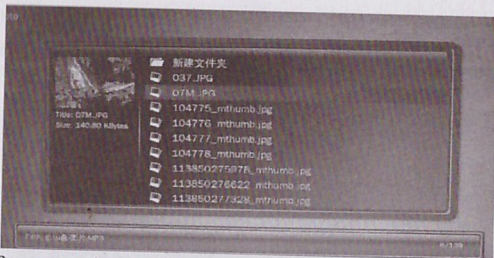
During movie playing, you can:

- * Press the "Mute" button to enter the mute status, and re-press this button to release the mute status;
- * Press the "VOL+/VOL-" button to adjust the volume;
- * Press the "Pause" button to pause playing, and re-press this button to start playing;
- * Press the "Previous/Next" button to select playing the previous movie or next movie;
- * Press the "Fast Forward/Rewind" button to fast forward or fast rewind;
- * Press the "16:9/4:3" button to switch the screen display ratio;
- * Press the "Sub-T/SRT" button to conduct multi-caption switch, which needs file support;
- * Press the "Audio/L/R" button to conduct multi-track switch, which needs file support;
- * Press the "Stop" button to stop playing and return to the beginning.
- * Press the "OSD" button to open the playback control menu.

3.2.2 Photo

Select the "Photo" icon and then press the "OK" button to enter.

~8~



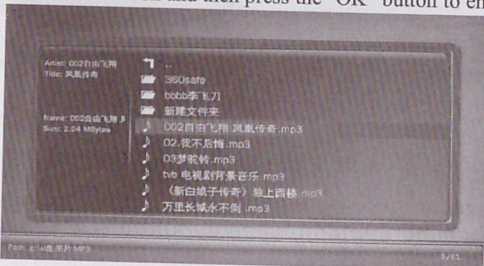
After you select a picture, a related information for the picture will be displayed. And then you can press the "OK" button to play the pictures in slide in full screen.

During playing of pictures in slide in full screen, you can

- * Press the "Pause" button to pause playing, and then re-press this button to start playing;
- * Press the "Previous/Next" button to select playing the previous page or next page;
- * Press the "Zoom" button to zoom the picture;
- * Press the "ANGLE" button to rotate the picture;
- * Press the "Stop" button to stop playing and return to the beginning.

3.2.3 Music

Select the "Music" icon and then press the "OK" button to enter.



~9~

After you select a music file, the related information will be displayed. And then you can press the "OK" button to playing music.

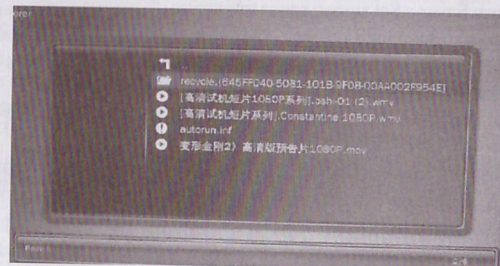


3.2.4. Explorer

The "Explorer" function can view and play all files supported by this player. It amounts to a resource manager.

Note: the "Movie", "Music" and "Photo" are dependant, whereas the "Explorer" does not need to distinguish the media type. The "Movie", "Music" and "Photo" all can be played. (All the types supported by the system can be played).

Select the "Explorer" icon and press the "OK" button to enter.

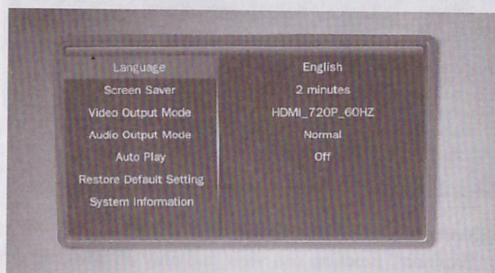


~10~

The system displays all file formats that can be supported. Select the required file, and then press the "OK" button to play it.

3.2.5 Setting

Press the "Setting" icon, and then press the "OK" button to enter.



Press "▲ / ▼" button to select an item from "Language", "Screen Saver", "Video Output Mode", "Audio Output Mode", "Auto Play", "Restore Default Setting", "System Information", and then press the "OK" button to enter.

- (1) Language: English, Simplified Chinese, Traditional Chinese, etc.
- (2) Screen Saver : Set screen saver time.
- (3) Video Output Mode: NTSC, PAL, 480I, 576I, 480P, 576P, 720P, 1080I and 1080P.
- (4) Audio Output Mode: Set audio output mode.
- (5) Auto Play: Set video, music or photo auto play when the player start.
- (6) Restore Default Setting: Used to resume factory default.
- (7) System Information: Display the software version related information.

It is suggested that the users use the automatic setting, and the manual setting is only applicable to the superior users.

Chapter IV Troubleshooting

1. After powering on of this player, there is no response, black screen or abnormal display on TV set

Please check whether the corresponding audio and video cables are connected correctly; check whether the signal source of TV set is switched correctly; check whether it is switched to corresponding output mode via the button on the remote controller.

2. Unable to power on this player

Check whether the power is connected properly. Please try to unplug and plug the power plug.

3. No sound

Check whether the audio cable is connected correctly.

4. The remote controller is not sensitive or functional

Check whether the distance of remote controller is too far or the deviating angle is too large. Check whether the battery of remote controller is connected properly or whether the battery capacity is lower.

5. Unable to identify the mobile hard disk

Check the mobile hard disk is connected properly; check whether the power supply for the mobile hard disk is normal; check whether the mobile hard disk itself has problem; in case of a large capacity hard disk, it is recommended that the user purchase a hard disk holder with power supply.

6. Unable to identify memory card and mobile storage equipment

Unplug and plug the storage equipment again or unplug and plug the power supply of this TV box; check whether the storage equipment is damaged.

Note 1: With continuous improvement and upgrading of system, the actual display and operation will slightly differ from what was described in this manual. This is normal and will not influence your normal operation and enjoyment.

Note 2: The photos here are only for reference. If there is any difference from the actual product, the actual product shall prevail.