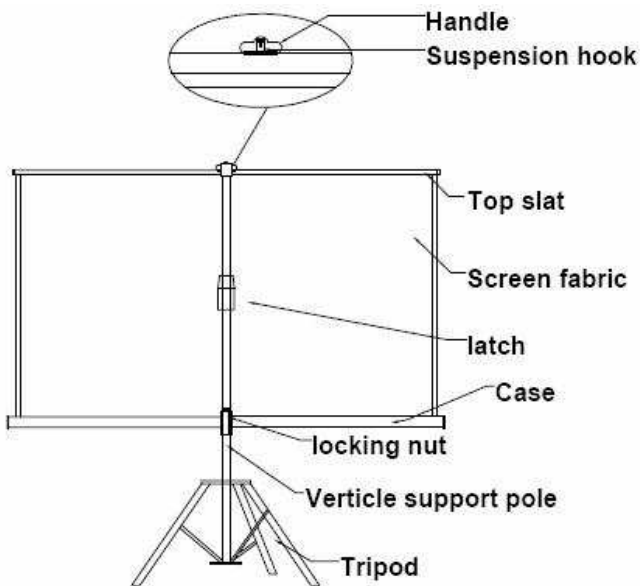


Tripod Screen User Manual

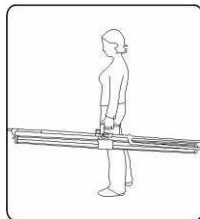
Parts Identification



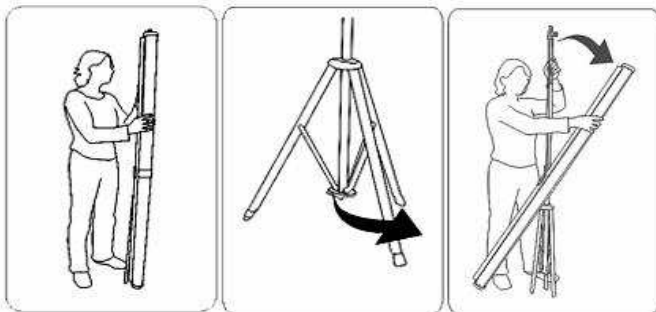
Screen Operation

Carrying the screen:

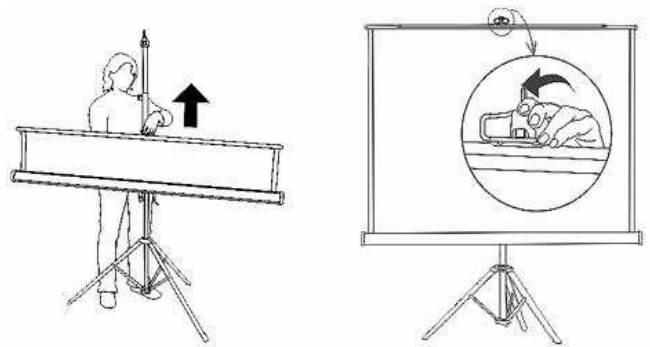
When carrying the screen, use the handle provided.



Setting up the screen:



1. Stand the screen vertically on the tripod.
2. Open the tripod legs as wide as possible.
3. Rotate the case 90° so that it is horizontal, making sure the top slat is facing upwards. Release the latch on the carrying handle and lower the case to an appropriate height, and then secure the latch again.
4. Pull the screen fabric up by using the handle on the top slat making sure it stays horizontal.
5. Loosen the locking nut on the vertical support and extend it to the desired height. Make sure the locking nut is tightened securely afterwards.



6. Hang the handle on the suspension hook in one of the notches. The angle of the screen can be adjusted by placing the handle in different notches.

Taking the screen down:

1. Use the handle on the top rail to lower the screen fabric back into its case. Do not let go of the handle until the screen fabric is fully retracted, doing so may damage the screen.
2. Loosen the locking nut on the vertical support pole and retract the pole to its original length. Securely tighten the locking nut.
3. Release the latch on the carrying handle and raise the case back to its original position, then secure the latch again.
4. Rotate the case 90° so that it is in the vertical position.
5. Gather the tripod legs together.